

# Verona

COLORS BOOK

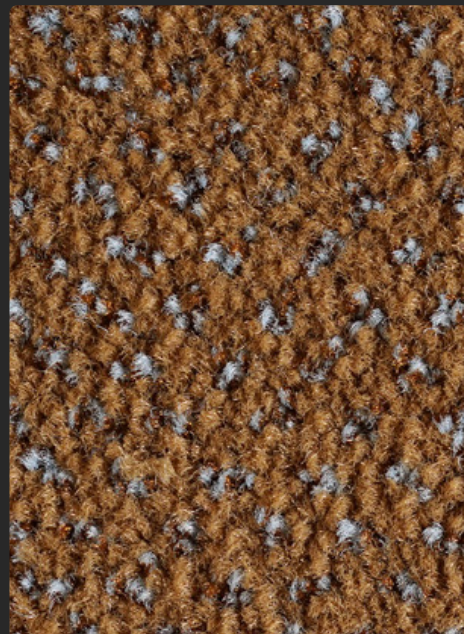
**RADICI**  
CARPET



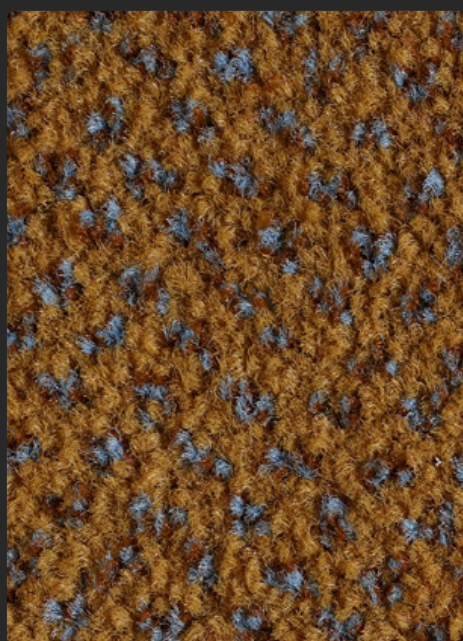
**Sabbia 2420**



**Tortora 9711**



**Cammello 2406**



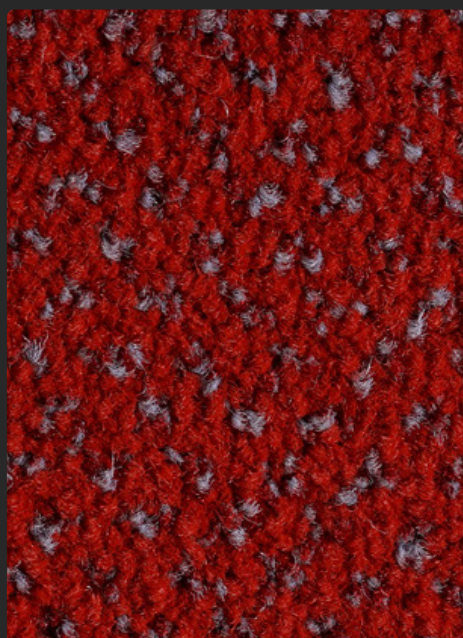
**Ocra 2105**



**Cotto 2102**



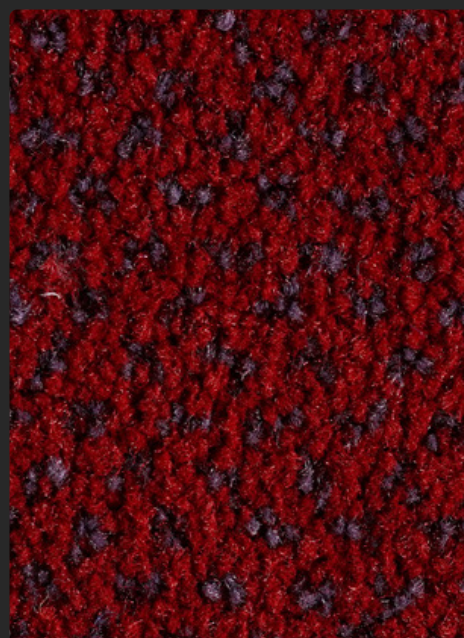
**Aragosta 2403**



**Arancio 2404**



**Borgogna 2405**

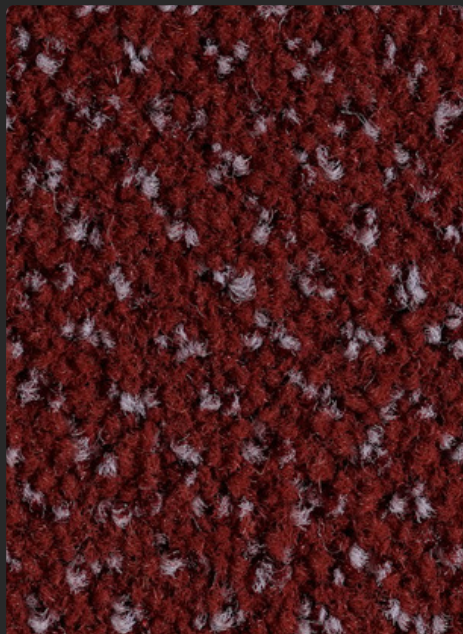


**Rosso 2106**

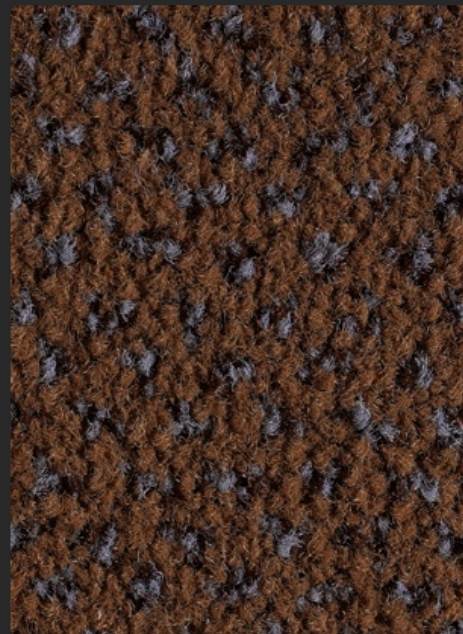
I colori reali possono variare. Ciò è dovuto all'incongruenza tra diversi monitor.  
Actual colors may vary. This is due to computer monitors displaying colors differently.



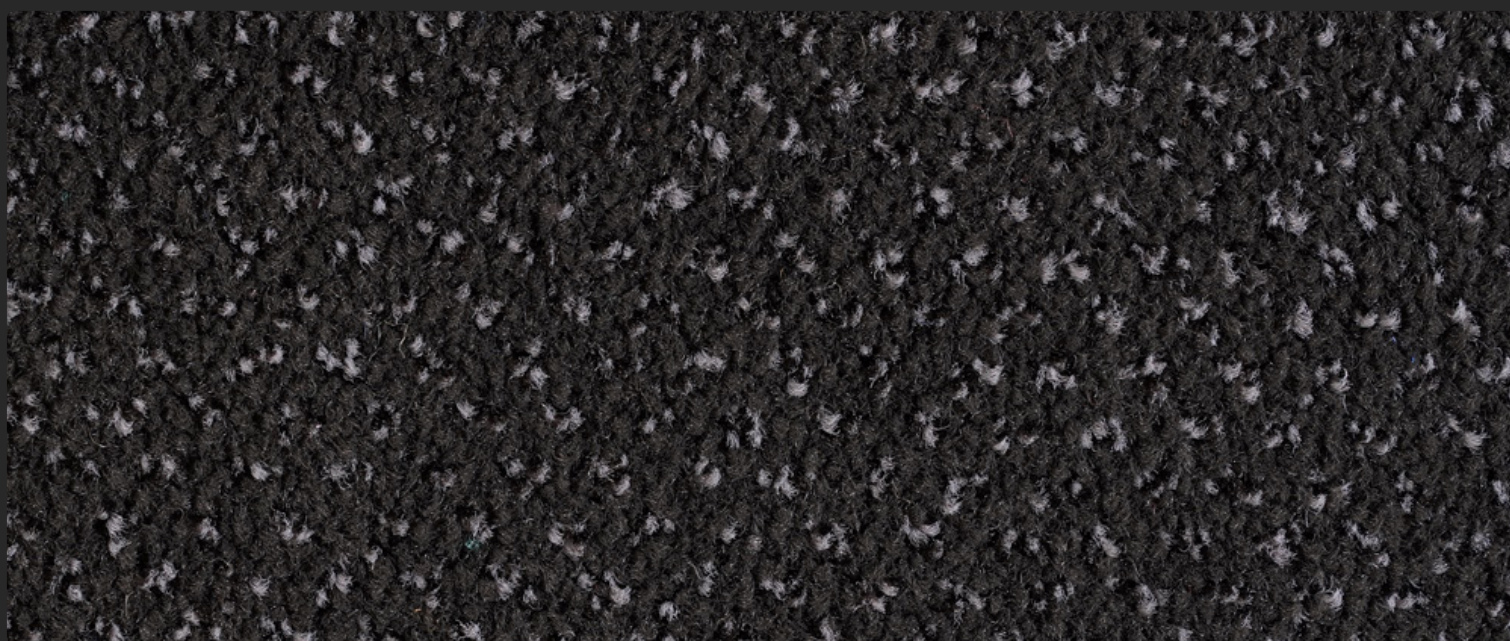
**Amarena 2401**



**Corallo 9703**



**Daino 2409**



**Grillo 308C**



**Humus 321B**



**Liquirizia 307C**



**Flanella 322D**

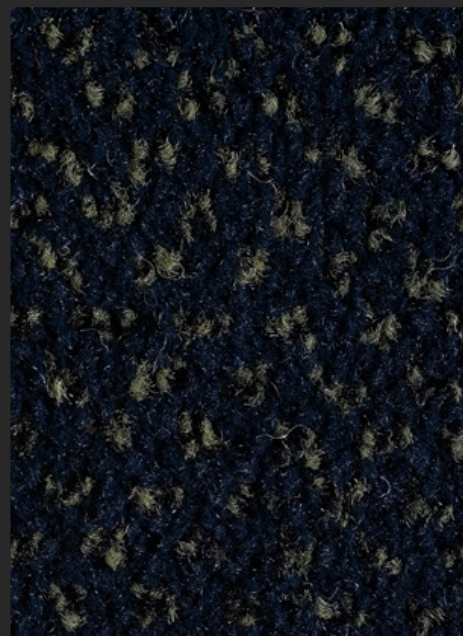
I colori reali possono variare. Ciò è dovuto all'incongruenza tra diversi monitor.  
Actual colors may vary. This is due to computer monitors displaying colors differently.



**Oliva 2418**



**Foresta 9705**



**Navy 2104**



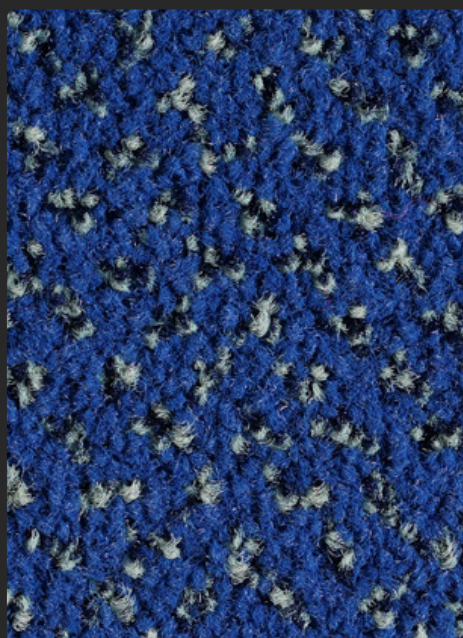
**Royal 2419**



**Oceano 9710**



**Marino 2103**



**Cobalto 2408**



**Tirreno 9712**



**Cenere 9702**

I colori reali possono variare. Ciò è dovuto all'incongruenza tra diversi monitor.  
Actual colors may vary. This is due to computer monitors displaying colors differently.

# VERONA

**RADICI**  
CARPET

CE EN14041



Specifications in according EN 1307



Information sur le niveau d'émission de substances volatiles dans l'air intérieur, présentant un risque de toxicité par inhalation, sur une échelle de classe allant de A+ (très faibles émissions) à C (fortes émissions)

## STAINADVERSE



Moquettes touffetées et tissées en lés  
<http://evaluation.upec.fr>  
04/074

COSTRUZIONE	CONSTRUCTION	TECHNIQUE DE FABRICATION	HERSTELLUNGSVERFAHREN
TUFTING VELLUTO CROSS-OVER 1/10"	TUFTED CUT PILE CROSS-OVER 1/10"	TUFTED VELOURS CROSS-OVER 1/10"	GETUFTED VELOURS CROSS-OVER 1/10"
<b>COMPOSIZIONE</b>	<b>COMPOSITION</b>	<b>COMPOSITION</b>	<b>POLNUTZSCHICHT</b>
100% POLIAMMIDE 6.6	100% POLYAMID 6.6	100% POLYAMIDE 6.6	100% POLYAMID 6.6
<b>SOTTOFONDO</b>	<b>SECONDARY BACKING</b>	<b>DOSSIER</b>	<b>RÜCKENAUSRÜSTUNG</b>
JUTA SINTETICA	SYNTHETIC JUTE	JUTE SYNTHÉTIQUE	SDR TEXTILRUCKEN
<b>PUNTI AL M<sup>2</sup></b>	<b>STITCHES PER M<sup>2</sup></b>	<b>TOUFFES AU M<sup>2</sup></b>	<b>KNOTEN M<sup>2</sup></b>
± 193550	± 193550	± 193550	± 193550
<b>ALTEZZA PELO</b>	<b>PILE HEIGHT</b>	<b>HAUTEUR DU VELOURS</b>	<b>POLHÖHE</b>
± 5.7 mm	± 5.7 mm	± 5.7 mm	± 5.7 mm
<b>ALTEZZA TOTALE</b>	<b>TOTAL HEIGHT</b>	<b>HAUTEUR TOTALE</b>	<b>GESAMTHÖHE</b>
± 8.2 mm	± 8.2 mm	± 8.2 mm	± 8.2 mm
<b>PESO FIBRA</b>	<b>YARN WEIGHT</b>	<b>POIDS DU VELOURS</b>	<b>POLGEWICHT</b>
± 880 g/m <sup>2</sup>	± 880 g/m <sup>2</sup>	± 880 g/m <sup>2</sup>	± 880 g/m <sup>2</sup>
<b>PESO TOTALE</b>	<b>TOTAL WEIGHT</b>	<b>POIDS TOTAL</b>	<b>GESAMTGEWICHT</b>
± 1900 g/m <sup>2</sup>	± 1900 g/m <sup>2</sup>	± 1900 g/m <sup>2</sup>	± 1900 g/m <sup>2</sup>
<b>LARGHEZZA ROTOLO</b>	<b>ROLL WIDTH</b>	<b>LARGEUR DU ROLEAU</b>	<b>BREITE</b>
400 cm	400 cm	400 cm	400 cm
<b>FAMIGLIA TUFTING 1</b>	<b>FAMIGLIA TUFTING 1</b>	<b>FAMIGLIA TUFTING 1</b>	<b>FAMIGLIA TUFTING 1</b>



**COMFORT: ★★★★★☆**

**BUSINESS WEARABILITY: ★★★☆☆**

**DOMESTIC WEARABILITY: ★★★☆☆**

Colour fastness to light	≥ 5	Thermal resistance m2 K/W	≤ 0,17
Insulation impact noise ΔLw	25 dB	Body voltage walking test kV	≤ 2
Acoustical absorption α <sub>w</sub>	0,25		

# RADICI

CARPET

RADICI PIETRO INDUSTRIES & BRANDS S.P.A.

---

[www.radicicarpet.it](http://www.radicicarpet.it) - [info@radicicarpet.it](mailto:info@radicicarpet.it) - +39 035 724242

in f Radici Carpet @ radicicarpet